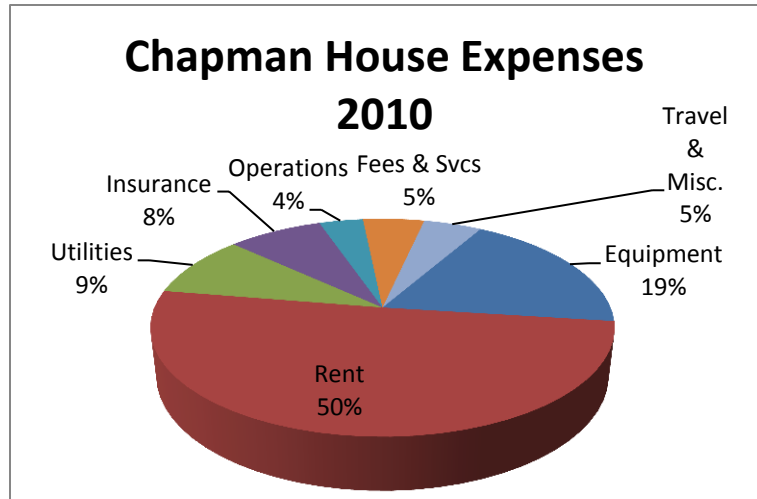
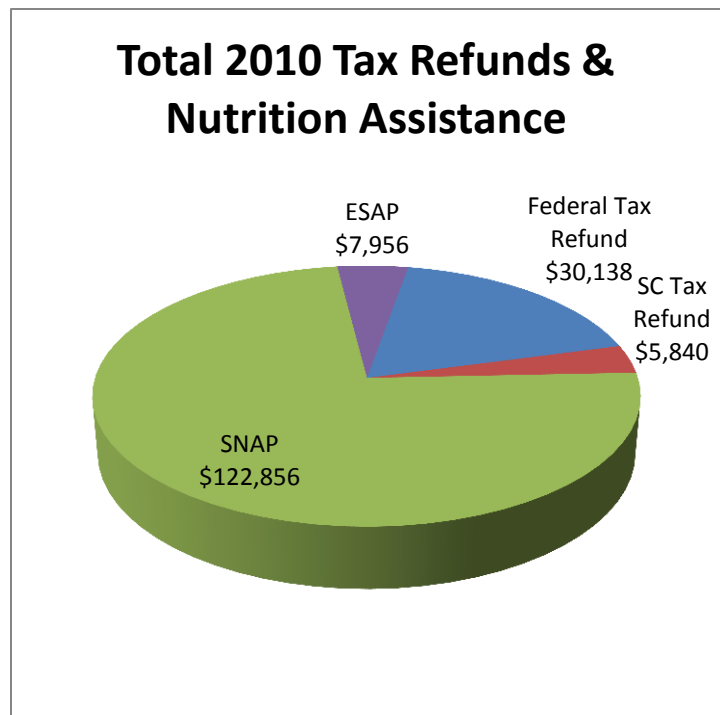




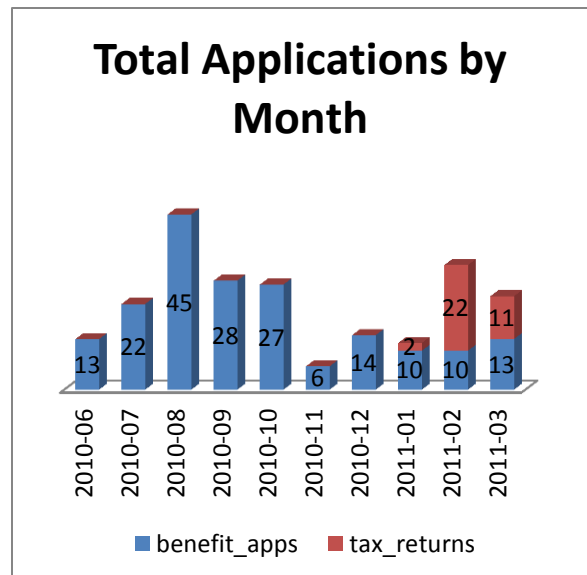
The cost of operating Chapman House is currently dependent on local sources. Although this cost is currently low due to an all-volunteer staff and shortened hours of operation, there is a great need for administration and staff to build our capacity to serve the community, and diversity of funding will be a critical challenge for Chapman House.



Since opening in May of 2010, Chapman House has assisted our neighbors with applications for a total of \$166,790 in tax refunds, credits and benefits.<sup>1</sup> Over 78% of these funds are in the form of annually recurring nutrition assistance for fifty local families who were eligible for an approximate total of \$130,812 in benefits through the SNAP and ESAP programs alone. This is almost \$200 per family per month that when added to a family's net income can literally raise that family out of poverty. In addition, since benefits are spent immediately in the communities where those families live, the help they receive also provides an immediate stimulus to the local economy.



Monthly total applications reached a peak in August, and fell sharply in November, but have rebounded since the addition of Federal and State Tax filing assistance to the programs accessible at Chapman House and the help of a new counselor on our staff. With more resources and assistance, we can expand access to services and strengthen our neighbors and neighborhoods more effectively.



<sup>1</sup> As of 3/18/2011